

SWEET CHARITY 2016

Designer: Leon Rothenberg

A1: Josh Staines
A2: Jeff Sherwood

Name:

Character:

RF:



Transmitter:

Element:

Serial No:

Hat: Yes No

Wig: Yes No

Hair Color:

Element Color:

Skin Color:

Frequency:

Cap:

Element Placement:

Transmitter Placement:

Dressing Notes



SWEET CHARITY 2016

Designer: Leon Rothenberg

A1: Josh Staines
A2: Jeff Sherwood

Name:

Character:

RF:



Transmitter:

Element:

Serial No:

Hat: Yes No

Wig: Yes No

Hair Color:

Element Color:

Skin Color:

Frequency:

Cap:

Element Placement:

Transmitter Placement:

Dressing Notes

- E37 and Sally 351 blend on head
- E37 + E11 blend for 4" from tip



SWEET CHARITY 2016

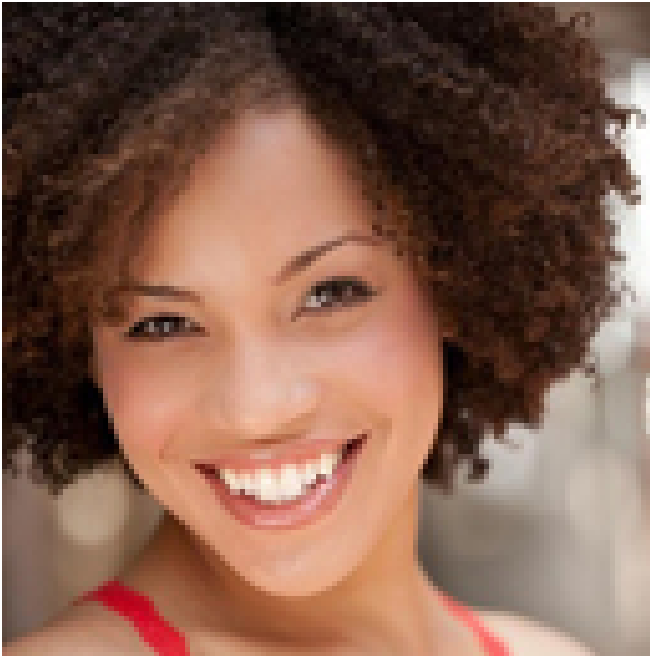
Designer: Leon Rothenberg

A1: Josh Staines
A2: Jeff Sherwood

Name:

Character:

RF:



Transmitter:

Element:

Serial No:

Hat: Yes No

Wig: Yes No

Hair Color:

Element Color:

Skin Color:

Frequency:

Cap:

Element Placement:

Transmitter Placement:

Dressing Notes

*Wardrobe puts mic element thru loops on actor's bra for cable dressing, daily

- Sally 351 nail polish on tip, then color w/ E34 + E11 blend
- color 6mm from tip to 6mm from tip w/ E34 and E11 blend
- color 28mm from 30mm from tip to 58mm from tip w/ E11 only"



SWEET CHARITY 2016

Designer: Leon Rothenberg

A1: Josh Staines
A2: Jeff Sherwood

Name:

Character:

RF:



Transmitter:

Element:

Serial No:

Hat: Yes No

Wig: Yes No

Hair Color:

Element Color:

Skin Color:

Frequency:

Cap:

Element Placement:

Transmitter Placement:

Dressing Notes

*Wardrobe puts mic element thru loops on actor's bra for cable dressing, daily
- silver tip of head, blend E11 with thick coat of Sally 351



SWEET CHARITY 2016

Designer: Leon Rothenberg

A1: Josh Staines
A2: Jeff Sherwood

Name:

Character:

RF:



Transmitter:

Element:

Serial No:

Hat: Yes No

Wig: Yes No

Hair Color:

Element Color:

Skin Color:

Frequency:

Cap:

Element Placement:

Transmitter Placement:

Dressing Notes

*Wardrobe puts mic element thru loops on actor's bra for cable dressing, daily
- silver tip of head, blend E11 with thick coat of Sally 351
- transmitter antenna covered with Nexcare waterproof first aid tape, colored with E11



SWEET CHARITY 2016

Designer: Leon Rothenberg

A1: Josh Staines
A2: Jeff Sherwood

Name:

Character:

RF:



Transmitter:

Element:

Serial No:

Hat: Yes No

Wig: Yes No

Hair Color:

Element Color:

Skin Color:

Frequency:

Cap:

Element Placement:

Transmitter Placement:

Dressing Notes

- color 10mm from tip to 10mm from tip w/ E11 only
- head colored w/ E39 blended w/ Sally 351 nail polish



SWEET CHARITY 2016

Designer: Leon Rothenberg

A1: Josh Staines
A2: Jeff Sherwood

Name:

Character:

RF:



Transmitter:

Element:

Serial No:

Hat: Yes No

Wig: Yes No

Hair Color:

Element Color:

Skin Color:

Frequency:

Cap:

Element Placement:

Transmitter Placement:

Dressing Notes

- boom ___?___mm in length from tip to ear loop connection
- small strip of moleskin on head of mic, first sprayed liberally with scotch guard and then colored with PM214
- 2 toupee clips, teeth facing left



SWEET CHARITY 2016

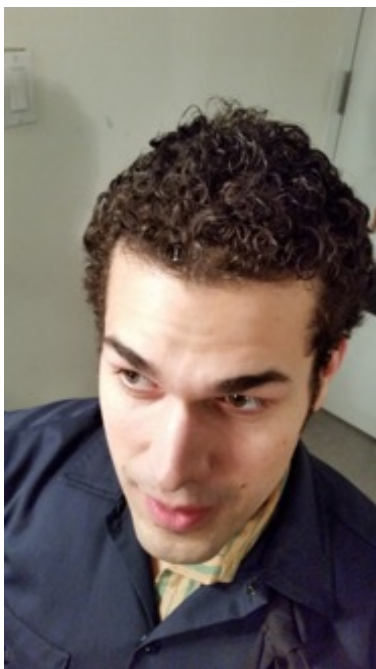
Designer: Leon Rothenberg

A1: Josh Staines
A2: Jeff Sherwood

Name:

Character:

RF:



Transmitter:

Element:

Serial No:

Hat: Yes No

Wig: Yes No

Hair Color:

Element Color:

Skin Color:

Frequency:

Cap:

Element Placement:

Transmitter Placement:

Dressing Notes

- *Needs help daily at 5 min until places to help dress cable thru hair / hide the mic cord
- poparazzi black nail polish on head, with Sally Big Matte Top Coat
- E100 and Testors Flat Black paint marker on element
- black color from tip to ___?___mm from tip
- coat coloring with Sally Hansen Big Matte Top Coat nail polish
- 3 small toupee clips, teeth facing right

SWEET CHARITY 2016

Designer: Leon Rothenberg

A1: Josh Staines
A2: Jeff Sherwood

Name:

Character:

RF:



Transmitter:

Element:

Serial No:

Hat: Yes No

Wig: Yes No

Hair Color:

Element Color:

Skin Color:

Frequency:

Cap:

Element Placement:

Transmitter Placement:

Dressing Notes

- boom arm = 4.7mm in length from tip to ear loop connection
- E37+E29 on boom arm for sideburn color
- E29+Sally 351 nail polish on head



SWEET CHARITY 2016

Designer: Leon Rothenberg

A1: Josh Staines
A2: Jeff Sherwood

Name:

Character:

RF:



Transmitter:

Element:

Serial No:

Hat: Yes No

Wig: Yes No

Hair Color:

Element Color:

Skin Color:

Frequency:

Cap:

Element Placement:

Transmitter Placement:

Dressing Notes

- boom length = 3.7mm from tip
- 25ga or 26ga wire, black coated
- ear loop + element colored w/ PM214 from tip to 8" from tip
- head colored with PM214 and Sally 351 blend

SWEET CHARITY 2016

Designer: Leon Rothenberg

A1: Josh Staines
A2: Jeff Sherwood

Name:

Character:

RF:



Transmitter:

Element:

Serial No:

Hat: Yes No

Wig: Yes No

Hair Color:

Element Color:

Skin Color:

Frequency:

Cap:

Element Placement:

Transmitter Placement:

Dressing Notes

- boom length = 3.7mm from tip
- 25ga or 26ga wire, black coated
- ear loop + element colored w/ PM214 from tip to 8" from tip
- head colored with PM214 and Sally 351 blend



SWEET CHARITY 2016

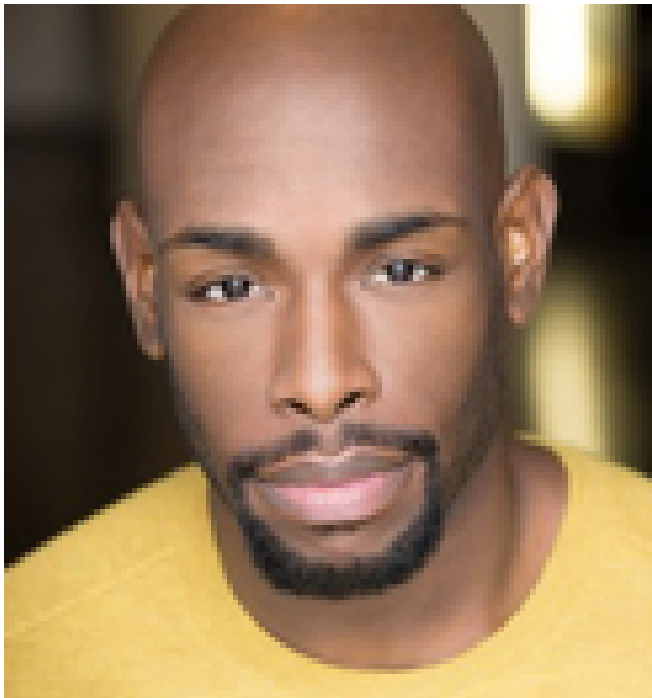
Designer: Leon Rothenberg

A1: Josh Staines
A2: Jeff Sherwood

Name:

Character:

RF:



Transmitter:

Element:

Serial No:

Hat: Yes No

Wig: Yes No

Hair Color:

Element Color:

Skin Color:

Frequency:

Cap:

Element Placement:

Transmitter Placement:

Dressing Notes

- E29 coloring
- 4mm boom length

SWEET CHARITY 2016

Designer: Leon Rothenberg

A1: Josh Staines
A2: Jeff Sherwood

Name:

Character:

RF:



Transmitter:

Element:

Serial No:

Hat: Yes No

Wig: Yes No

Hair Color:

Element Color:

Skin Color:

Frequency:

Cap:

Element Placement:

Transmitter Placement:

Dressing Notes

- silver tip of head, blend E11 with thick coat of Sally 351

SWEET CHARITY 2016

Designer: Leon Rothenberg

A1: Josh Staines
A2: Jeff Sherwood

Name:

Character:

RF:



Transmitter:

Element:

Serial No:

Hat: Yes No

Wig: Yes No

Hair Color:

Element Color:

Skin Color:

Frequency:

Cap:

Element Placement:

Transmitter Placement:

Dressing Notes

SWEET CHARITY 2016

Designer: Leon Rothenberg

A1: Josh Staines
A2: Jeff Sherwood

Name:

Character:

RF:



Transmitter:

Element:

Serial No:

Hat: Yes No

Wig: Yes No

Hair Color:

Element Color:

Skin Color:

Frequency:

Cap:

Element Placement:

Transmitter Placement:

Dressing Notes

SWEET CHARITY 2016

Designer: Leon Rothenberg

A1: Josh Staines
A2: Jeff Sherwood

Name:

Character:

RF:



Transmitter:

Element:

Serial No:

Hat: Yes No

Wig: Yes No

Hair Color:

Element Color:

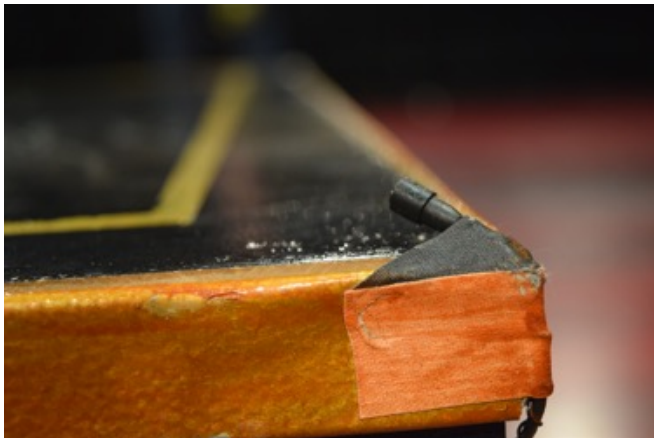
Skin Color:

Frequency:

Cap:

Element Placement:

Transmitter Placement:



Dressing Notes

SWEET CHARITY 2016

Designer: Leon Rothenberg

A1: Josh Staines
A2: Jeff Sherwood

Name:

Character:

RF:



Transmitter:

Element:

Serial No:

Hat: Yes No

Wig: Yes No

Hair Color:

Element Color:

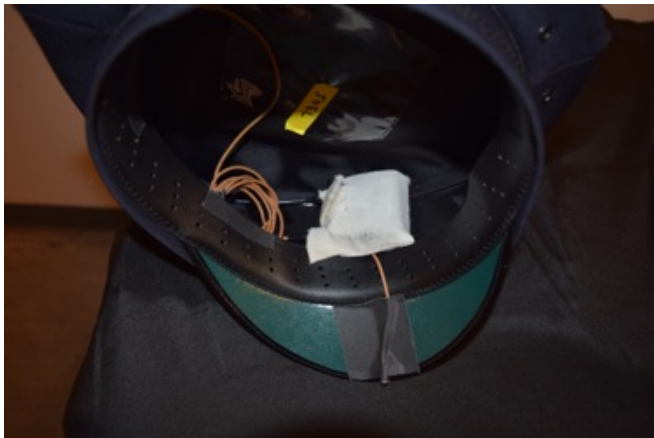
Skin Color:

Frequency:

Cap:

Element Placement:

Transmitter Placement:



Dressing Notes

SWEET CHARITY 2016

Designer: Leon Rothenberg

A1: Josh Staines
A2: Jeff Sherwood

Name:

Character:

RF:

Transmitter:

Element:

Serial No:

Hat: Yes No

Wig: Yes No

Hair Color:

Element Color:

Skin Color:

Frequency:

Cap:

Element Placement:

Transmitter Placement:



Dressing Notes